

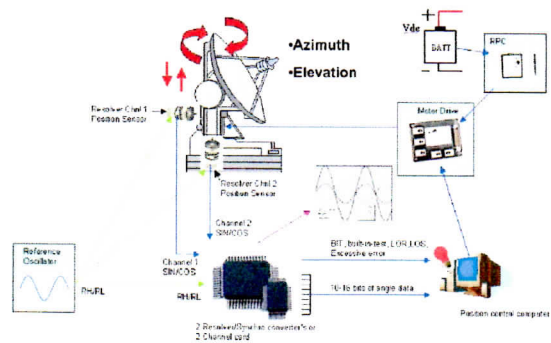
Solutions

Synchro to Digital Converter

Synchro to Digital converter is transducers/that converts the angular position and/or velocity of a rotating shaft to an electrical signal. A Synchro-to-Digital converter is used to convert these signals to a digital output corresponding to the shaft angle and/or velocity.

Applications

- ▷ Antenna Pedestal Control
- ▷ Military Fire Control System
- ▷ Naval Navigation
- ▷ Weapon System
- ▷ Robotics Positioning
- ▷ Mortor Control
- ▷ Jet Engine Control
- ▷ Factory Automation



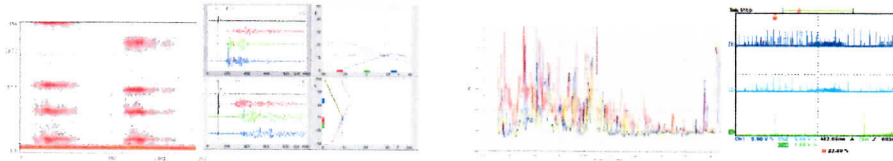
Solution Diagram

Emergency detector of air respirator user using RF communication technology

Features

- ▷ Monitoring pressure of air respirator
- ▷ Monitoring temperature around fireman
- ▷ Monitoring fireman's motion
- ▷ Quick-fill system
- ▷ PASS (personal alert safety system)





PPDM-PM (Portable Partial Discharge Monitor and Position Measurement) System

AWT's UHF PPDM-PM detects the PD (Partial Discharge) for HV GIS, High Tension Transformer and measures the position of PD. PPDM-PM is used to undertake periodic partial discharge surveys in sub stations to provide early warning of developing faults-enabling corrective action to be taken before the complete breakdown occurs.

PD data from up to 3 UHF sensors is collected and stored, and the type of defect is identified automatically through the in-built expert system analysis program.

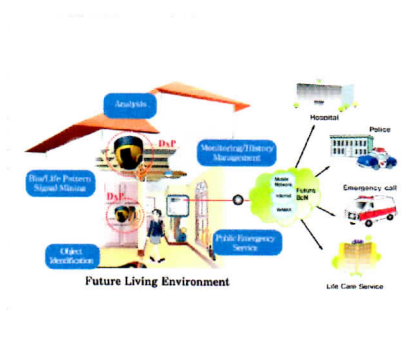
Features

- ▷ PD Position Measurement
- ▷ PD is interpreted automatically by expert system program
- ▷ Detects faults before failure, damage
- ▷ Fully protected against transient
- ▷ Usable for HV GIS, Transformer
- ▷ Automatic Self-Test
- ▷ External Sync : 5 ~ 10 VAC, 50 ~ 280 VAC

Applications

- ▷ PD tests on high voltage equipment
- ▷ PD diagnosis on developing insulating materials
- ▷ Designed for on-site PD diagnosis tests as well as for manufacturing and research
- ▷ Measure PD fault location for GIS, Transformer, Power cables

U-Healthcare (Sensor Module)



Monitor health status using Bio and space fusing sensor information

Features

- ▷ Bio-radar sensor measure heart rate and breath number
- ▷ IR camera provides body temperature and thermal image
- ▷ CCD camera provides color image
- ▷ Voice and image recognition provides user ID
- ▷ Send ID and Bio signals (Heart rate / Breath / Body temperature) to DxR
- ▷ DxR analyzes and provides health care service using the Bio signals